

TYRE INSPECTION CHART

Abnormal Tread Wear

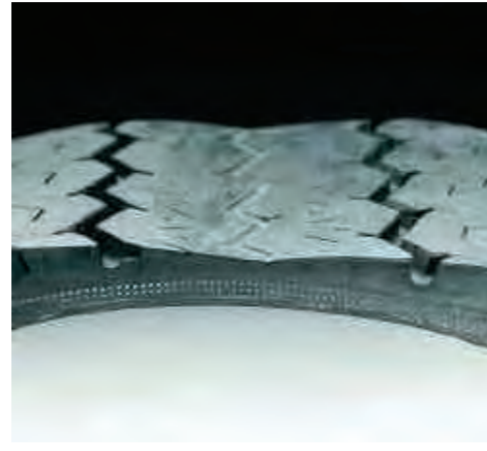
Tread wear issues appear as flat spots, or areas of rapid wear on the tyre. They can also be seen as deformed tread blocks or cracking in the tread area. This type of wear is usually a result of brake problems, suspension or alignment problems, an unbalanced tyre and wheel assembly, or misuse.



Mushroomed Tread



Rapid Shoulder Wear



Rapid Center Wear



Cracking Between Tread



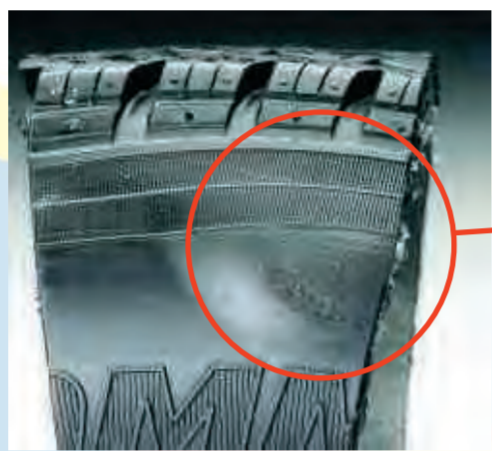
Flatspot

Sidewall Damage

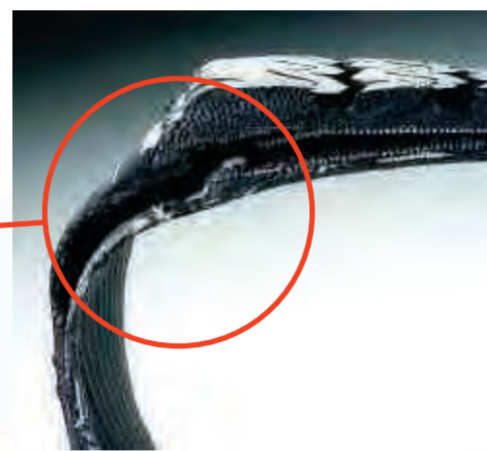
Sidewall damage appears as cuts, tears, bubbles, or scrapes anywhere along the sidewall of the tyre. This type of damage usually occurs when a tyre encounters a road hazard. This could include anything from a curb to a bolt or piece of metal. Sharp objects or very concentrated stresses usually cause cuts and tears. Bubbles and scrapes occur due to impact damage or prolonged abrasion.



Letter Defect



Sidewall Bubble - A bulge that appears on the outside of a tyre is usually a sign of separation



Sidewall Tear



Sidewall Cut

Tyre Separations

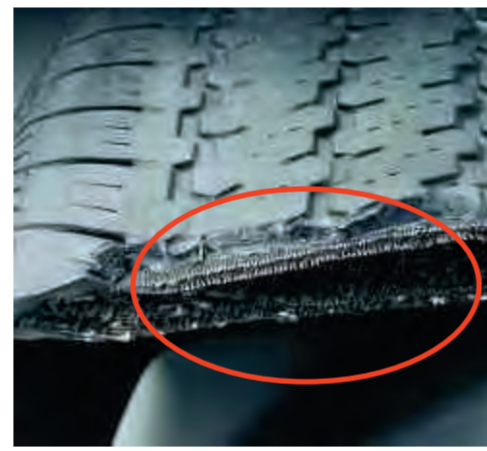
Separations appear as bulges on the shoulder or tread face, or as localized wear above the separated region. A groove worn along the shoulder could be a sign of separation. Separations are mainly caused by abnormal heat build up. Excessive heat can build up during prolonged high speed driving, overloaded or under-inflated tyre conditions. Separations can also be caused by penetration of water or foreign materials into the carcass of the tyre. This material enters through cuts caused by road hazards.



Bead Separation



Tread Separation



Belt Separation

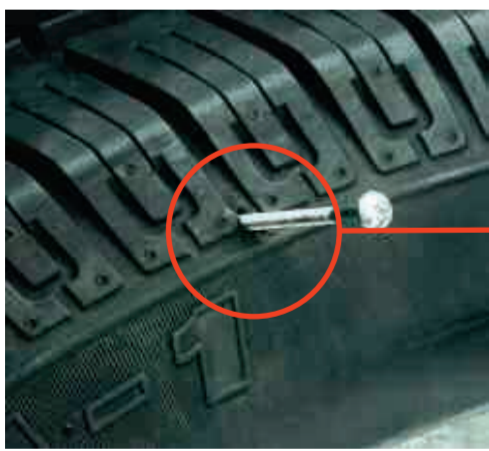


Shoulder Separation - A groove worn in the shoulder of the tyre is usually evidence of separation.



Road Hazard

Road Hazard Damage appears as protruding objects or cuts in the tyre. Misuse or neglect appears as wrinkles in the inner liner or scuffing that extends around the circumference of the tyre. Road hazard damage occurs when a sharp object comes in contact with the tyre. Misuse and neglect can occur to severely under-inflated tyres or to tyres with insufficient clearance between the tyre and fenders. It can also occur when dual axle tyres are overloaded, or there is not enough clearance between the two tyres of the assembly.



Puncture - Normally, the only evidence of a puncture will be a cut that extends from the tread of the tyre through the inner liner.



Under-Inflated tyre - An abrasion may run around the circumference of the tyre and wrinkles may be observed in the inner liner.



Bead Problems

Bead Problems appear as a broken bead, chafing of the rubber around the bead, or deformation of the bead area. A broken bead can occur when a tyre is mounted on an improper rim or carelessly mounted or dis-mounted. Bead chafing can occur when mounting a tyre on a dirty or mismatched rim, or when the tyre is in an overloaded or under-inflated condition. A bent or deformed bead usually occurs when the tyre is improperly stored, or excessive stress is applied to the bead area during mounting.



Broken Bead



Damaged Bead



Bent Bead

